

ROOSEVELT

CONSTRUCTION NEWSLETTER

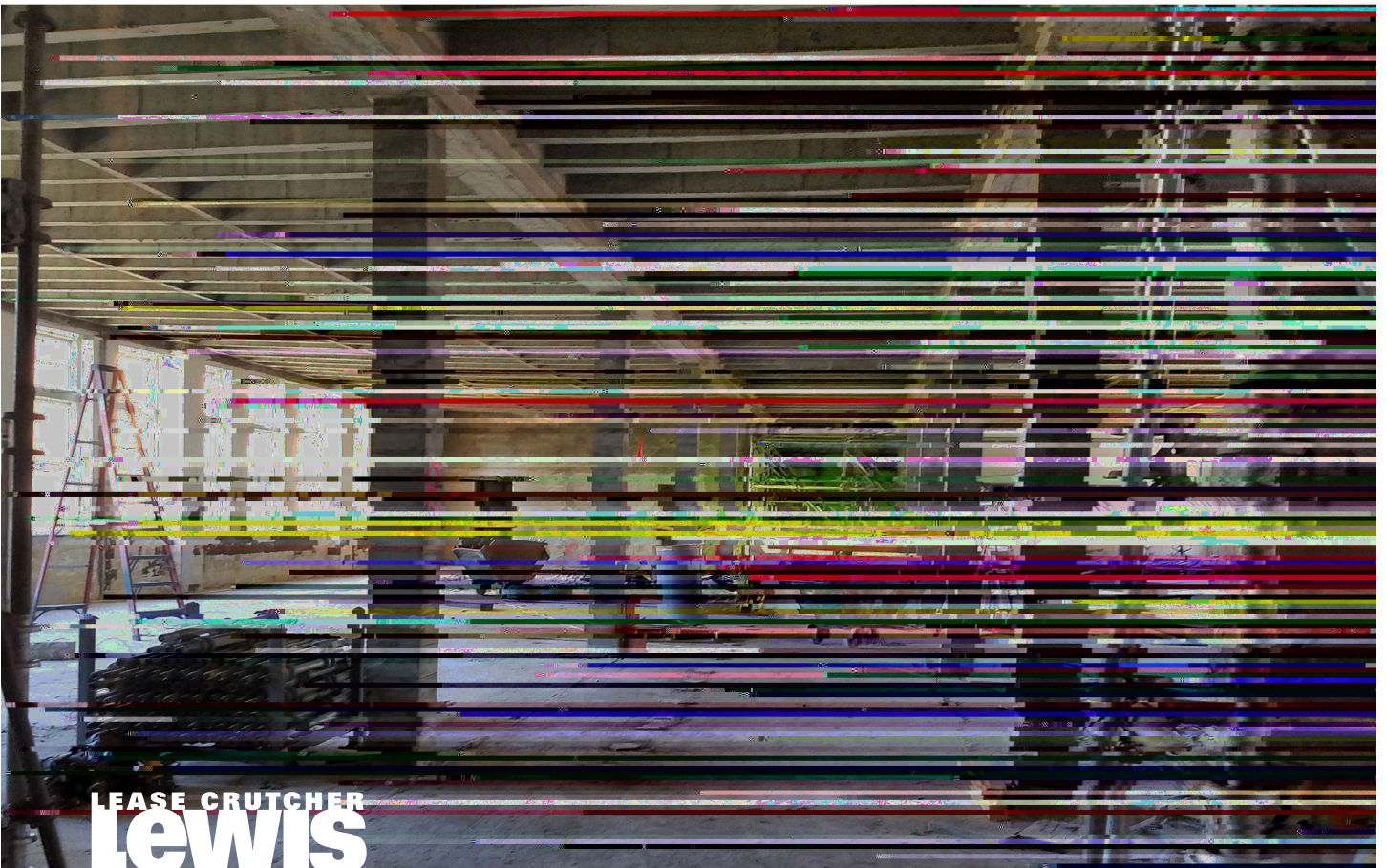
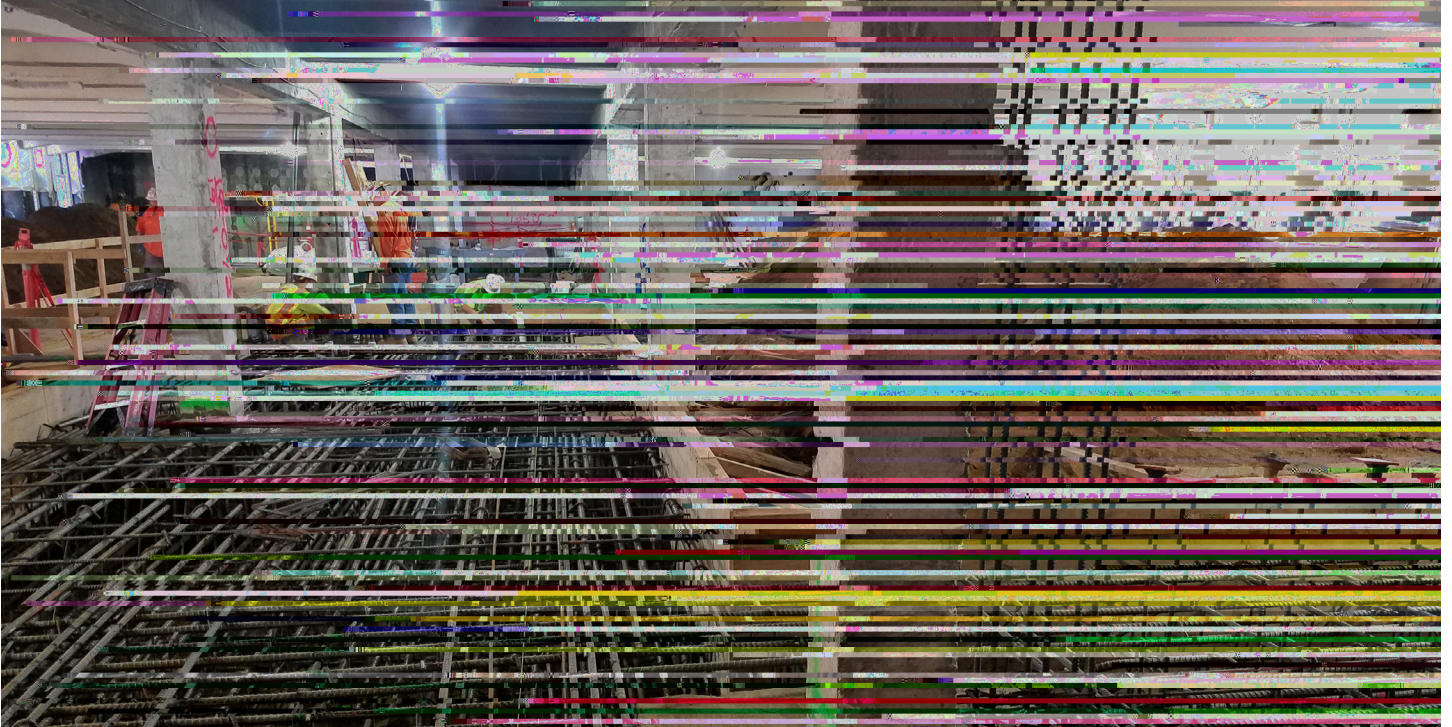
The Auditorium and Black Box are moving forward with interior finishes and rough-in work this month. Stage rigging for the new auditorium should start towards the end of the month. Kitchen finish work is taking place this month with new stainless equipment starting to install towards the end of this month. The Band Room area is in interior finish mode as well and will continue through next month. The New Commons interior finishes are moving forward and substantial progress should be made over the next few weeks. On the south side of campus the existing 1921 Building also known as Area B2 is wrapping up demolition and abatement. Seismic shearwall footings and walls are being prepared and concrete is being poured to begin vertically bringing these out of the ground. This is still a very active construction zone blended with the newly occupied areas. We appreciate Roosevelt High School's understanding in getting new phases complete for students and faculty.

Sincerely,

Michael C. Kingham
Senior Project Engineer, Roosevelt High School Modernization

ROOSEVELT MODERNIZATION

October 2016



LEASE CRUTCHER
Lewis